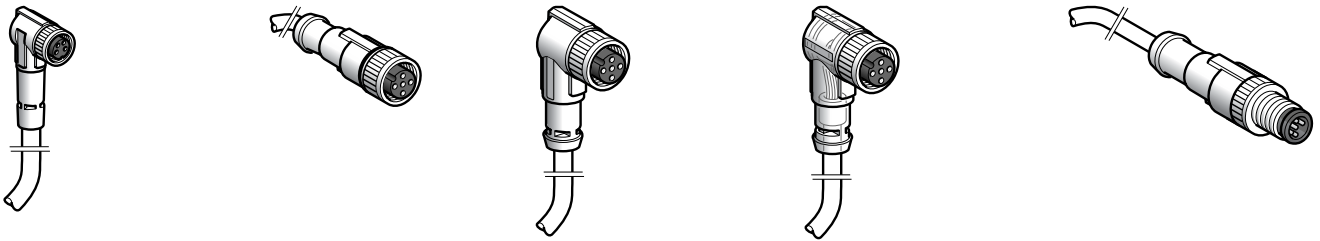


OsiSense™ XZ

Machine cabling accessories

Cabling systems

Specifications			
Type of cable		High-performance cables XZCP and XZCR See pages 13 to 33	General use cables XZCPV and XZCRV See pages 13 to 19
Ambient air temperature			
	For operation	°C (°F) -35 to +90 (-31 to +194)	-25 to +80 (-13 to +176)
	For storage	°C (°F) -55 to +100 (-67 to +212)	-55 to +80 (-67 to +176)
Color		Matte black	Gray
Material	Sheath	PUR/PVC	PVC
	Conductor insulation	PVC	PVC
Manufacturing method		Without silicone and without demolding agent	Without silicone and without demolding agent
Nominal voltage		V 320, conforming to DIN VDE 0110 (III/3)	~ 250 V, ≡ 300 V
Insulation voltage		kV 2.5	2.5
Flame resistance		C2 conforming to NF C 32-070	VW-1 conforming to UL758
Environmental resistance		Resistant to soluble, mineral, or synthetic oils at 194 °F (90 °C)	Conditions of use where not continuously immersed
Bending radius		Dynamic: 15 x external diameter Static: 10 x external diameter	Static: 10 x external diameter
Tensile strength		N/mm² 20 to 45	10
Hardness		80 ±5 Shore A	70 ±5 Shore A



Female, M8, elbowed	Female, M12, straight	Female, M12, elbowed	Female, M12, elbowed with PNP LED	Male, M12, straight
4	4	4	3	4
-	-	-	-	XZCPV1541L1
XZCPV1041L2	XZCPV1141L2	XZCPV1241L2	XZCPV1340L2	XZCPV1541L2
XZCPV1041L5	XZCPV1141L5	XZCPV1241L5	XZCPV1340L5	XZCPV1541L5
XZCPV1041L10	XZCPV1141L10	XZCPV1241L10	XZCPV1340L10	-
0.100 (0.22)	0.110 (0.24)	0.110 (0.24)	0.110 (0.24)	0.5 m (1.6 ft) = 0.052 (0.11)
0.200 (0.44)	0.210 (0.46)	0.210 (0.46)	0.210 (0.46)	1 m (3.3 ft) = 0.090 (0.20)
0.380 (0.84)	0.390 (0.86)	0.390 (0.86)	0.390 (0.86)	2 m (6.6 ft) = 0.200 (0.44)

cULus

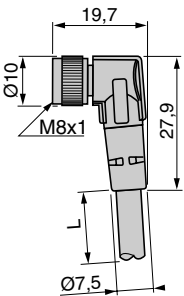
Screw threaded (metal clamping ring)

IP65

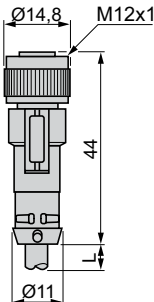
-25 to +80 °C (-13 to +176 °F)

Ø4.6 mm cable conductor c.s.a.: 4 x 0.25 mm ²	Ø4.6 mm cable conductor c.s.a.: 4 x 0.25 mm ²	Ø4.6 mm cable conductor c.s.a.: 4 x 0.25 mm ²	Ø4.6 mm cable conductor c.s.a.: 3 x 0.25 mm ²	Ø4.6 mm cable conductor c.s.a.: 4 x 0.25 mm ²
-	-	-	2 PNP LEDs	-
~ 60 V, --- 75 V	~ 250 V, --- 300 V	~ 250 V, --- 300 V	--- 10 to 30 V	~ 250 V, --- 300 V
3 A	3 A	3 A	3 A	3 A
0.2 N•m (1.77 lb-in)	0.4 N•m (3.54 lb-in)	0.4 N•m (3.54 lb-in)	0.4 N•m (3.54 lb-in)	0.4 N•m (3.54 lb-in)
> 10 ⁹ Ω	> 10 ⁹ Ω	> 10 ⁹ Ω	> 10 ⁹ Ω	> 10 ⁹ Ω
≤ 5 mΩ	≤ 5 mΩ	≤ 5 mΩ	≤ 5 mΩ	≤ 5 mΩ

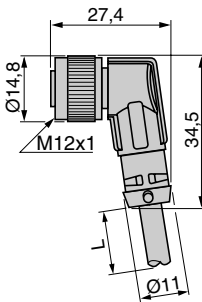
XZCPV1041L●



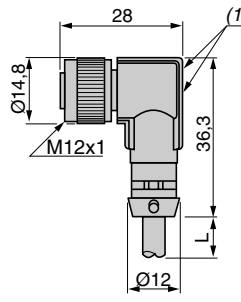
XZCPV1141L●



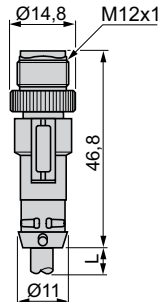
XZCPV1241L●



XZCPV13040L●



XZCPV1541L●



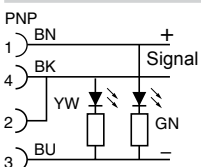
(1) 2 LEDs.

Cable: 2, 5, or 10 m (6.6, 16.4, or 32.8 ft).

1, 2, or 5 m (3.3, 6.6, or 16.4 ft).

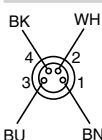
LED connection

XZCPV1340L●

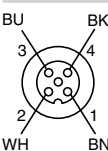


Connectors

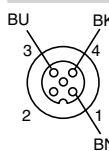
XZCPV1041L●



XZCPV1141L● and XZCPV1241L●



XZCPV13040L●



XZCPV1541L●

